

Rally Report

The Rally of the Valley, Oct 30 – Nov 2, 1999

Our triennial rally, shared with The West Gippsland and Bright clubs over the Melbourne Cup weekend, was a great success this year. Entry numbers were about normal with 75 cars and one motorcycle coming from as far away as Penola in SA. As you can see from my article in the Adviser below, there were plenty of vintage vehicles in town for the weekend.



by Brendan Walsh

A Big Vintage weekend

This coming weekend will be one to remember for those in the area that are interested in old cars and motorcycles. Three rallies are

being held, each catering for a different group of enthusiasts, but appealing to all.

The Goulburn Valley Motor Vehicle Drivers Club is holding its seventh Rally of the Valley, starting Saturday morning and finishing Tuesday morning. This rally is open to any member of any club, with participants coming from as far as South Australia to join in. About 70 vehicles are entered, ranging from vintage Dodges and classic Packards to more modern

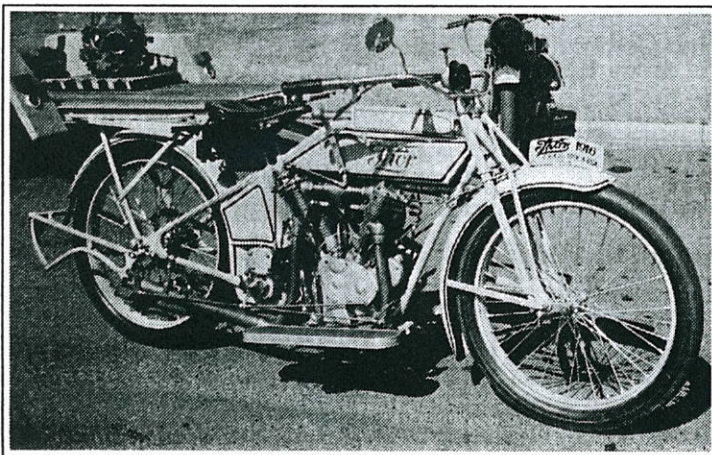
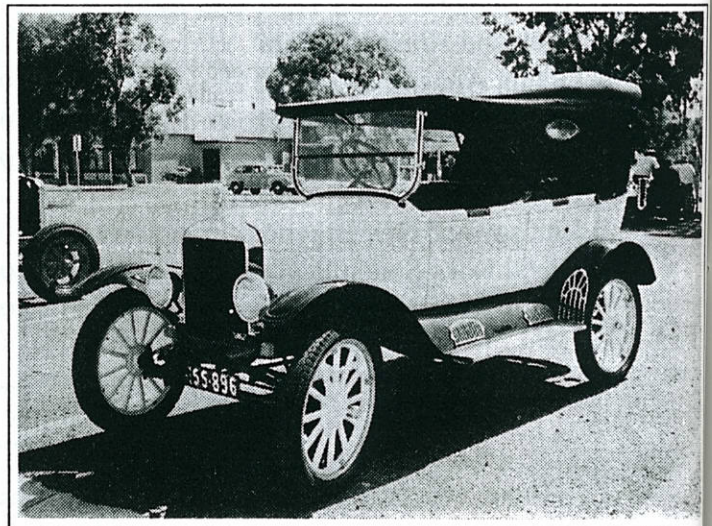
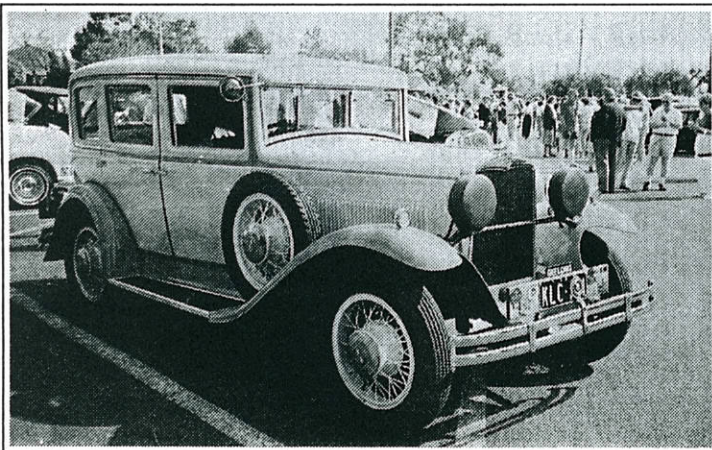
Citroëns and Jaguars. The runs will start from Princess Park each morning except for Tuesday, when those that have been able to stay for the full rally will have breakfast on the lake frontage before heading home.

For those more interested in two-wheeled transport, the Vintage Motorcycle Club of Victoria is holding a week-long touring rally from Saturday 30th October. Their 60 entrants are starting from Heathcote and travelling to Benalla, where they will stay for two nights. Later they will tour to Wodonga, along the Murray River to Echuca and then finish back in Heathcote on Saturday 6th November. Their run to Shepparton is on Sunday 31st, where you can see them at the Shepparton East Primary School around lunchtime. It's not often we get a chance to see this many motorcycles all built prior to 1942.

If you are interested in much older vehicles, the Model T Ford Club is running a rally as well. 17 veteran and vintage vehicles are expected, ranging from 1910 to 1927. They have some short runs planned for the weekend but you can see them on Monday 1st November. A procession through the centre of Shepparton is planned to start from about 10am, ending at Daryl Twitt Motors where the cars will be on display for about an hour. It should be well worth a visit.

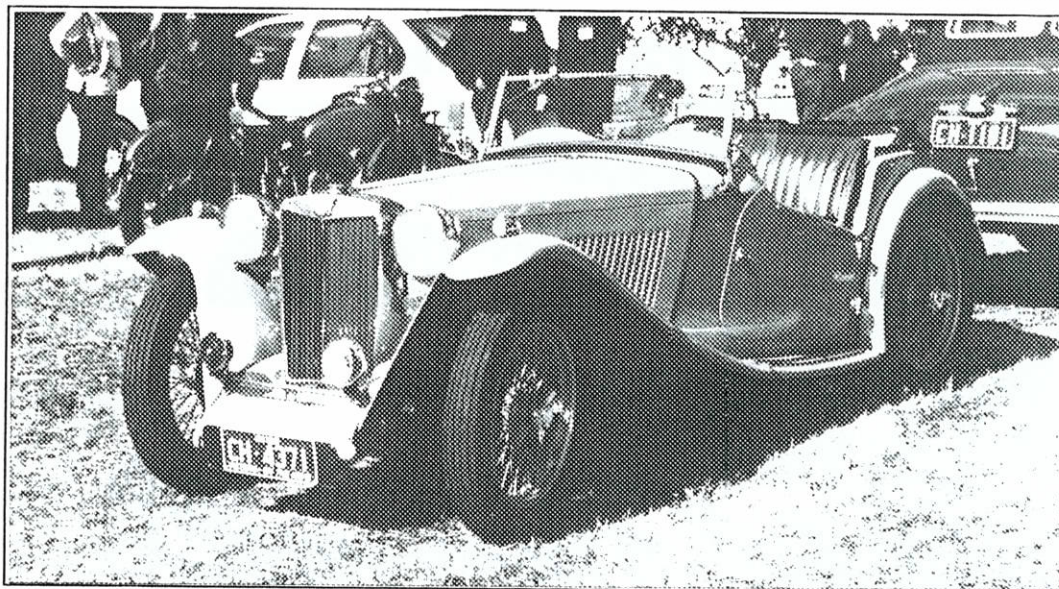
Club Contact:

G.V.M.V.D.C. Inc.
P.O. Box 704
Shepparton 3632



The types of vehicles you might see on this weekend's rallies - (top left) 1930 Hupmobile Model S sedan, (left) 1916 Thor 1000cc V-twin motorcycle and (above right) 1924 Ford Model T tourer.

*The Shepparton Adviser,
Wednesday 27th October, 1999*



1947 MG TC roadster

The rally started with the arrival of quite a few entrants on the Friday night. A warm welcome and a warm cuppa were all that was organised for Friday.

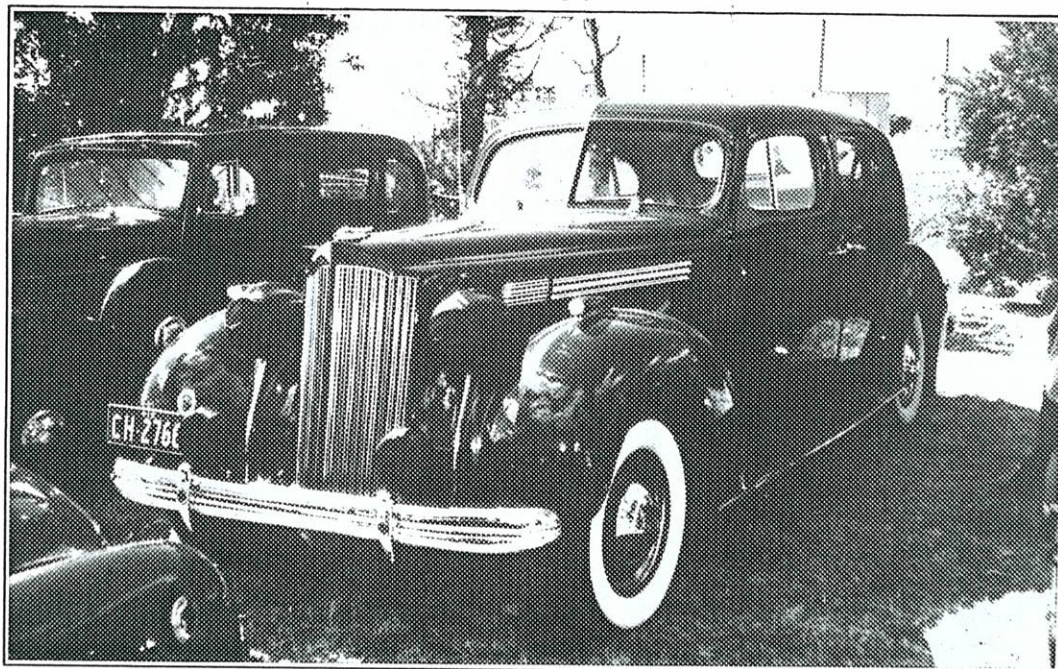
Saturday morning was a bit bleak and cool, but the majority of entrants arrived in time to hear Club President, John Pettigrew, give them a warm welcome and officially start the rally. It's not often you see somebody so well dressed wave the flag to go!

We headed for Echuca via Echuca Rd and the Murray Valley Hwy, getting there just in time for a gentle cruise along the Murray River on board the "Canberra" and the "Pride of The Murray". The only time it rained was while we were cruising, so we didn't get wet at all!

After the cruise we spent an enjoyable hour or two in Echuca, visiting some of the tourist attractions and finding the best place to have some lunch.

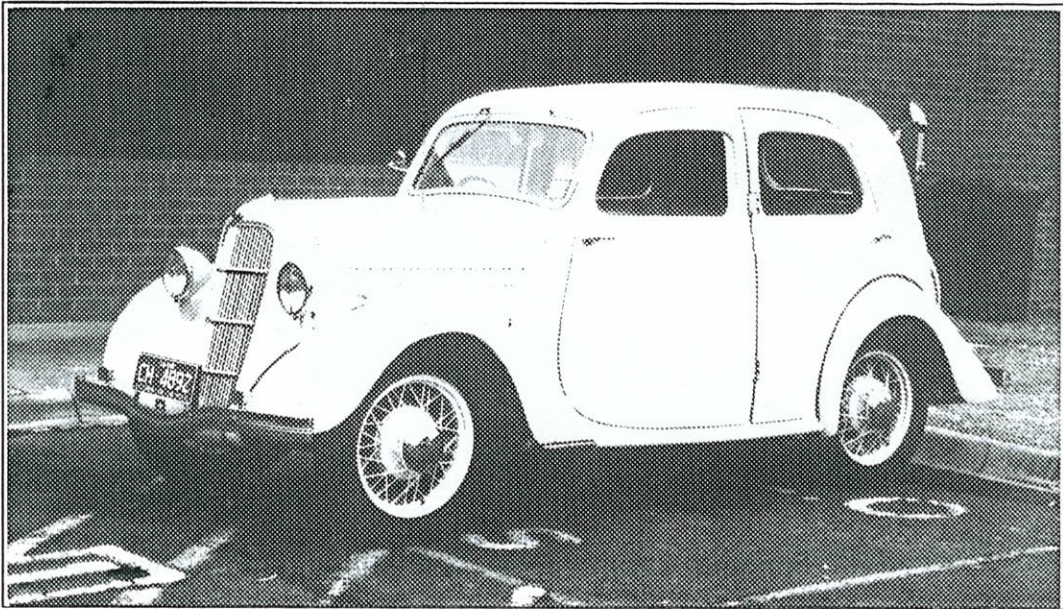
After lunch we headed interstate for a while, travelling along the Cobb Hwy before turning back into Victoria at Barmah. The drive across to Nathalia was most enjoyable as we followed the Broken Creek for a few miles after passing through Picola. Afternoon tea was served at Woodbine Gardens, where quite a few entrants were seen buying plants from the nursery.

That evening we had a BBQ meal in our extended and refurbished clubrooms. A job well done by the Club Catering Committee – nobody went home hungry!



1938 PACKARD touring sedan

Rally Report cont.

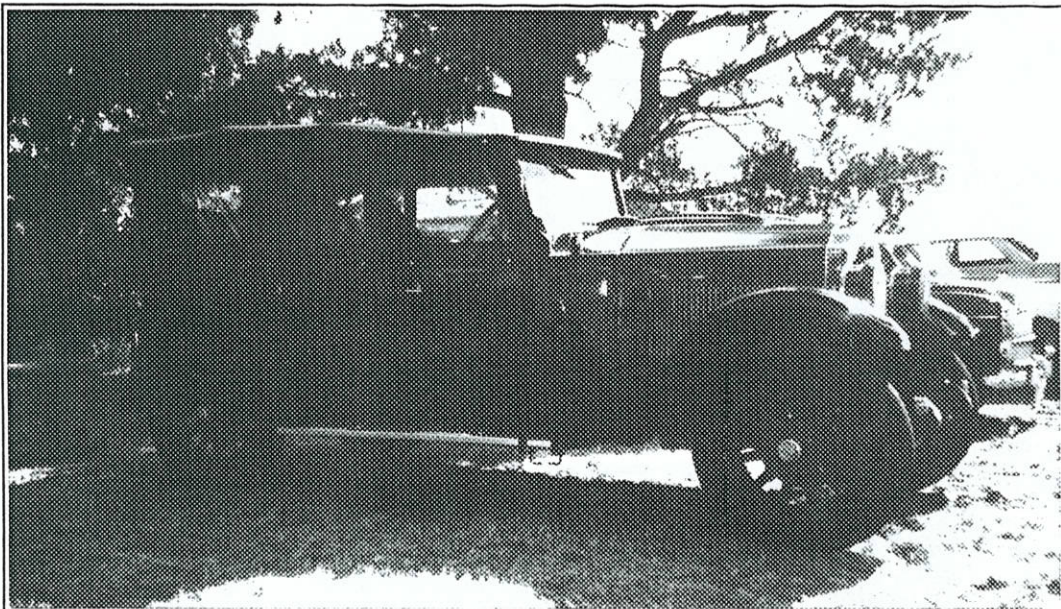
*1936 FORD CX sedan*

Sunday's run was a local trip with first our stop at the Emerald Bank Heritage Farm, a look at farm life as it was earlier this century. The kids enjoyed the farm animal nursery while several of the older generation had a good look at the collection of tractors. It is intended that the tractors will be the basis of a vehicle museum in the near future.

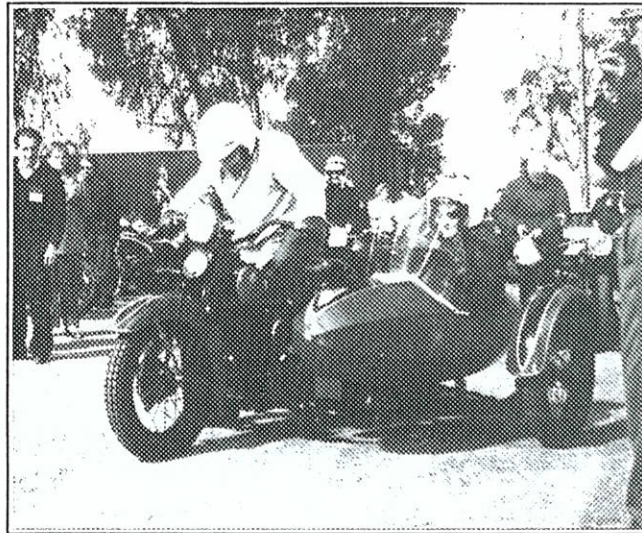
From there we headed to the Peppermill Inn Hotel for a delicious roast lunch.

Our next stop was one of two beautiful gardens, one at each end of Shepparton. Due to time and space restraints, we couldn't all get to both, so we split into two groups. (But I'm sure a few keen gardeners made the effort to see them both and arrived late for afternoon tea!) "Rosewoods" is an interesting garden with plenty of winding paths leading to hidden areas. Some of us even came away with free samples! I didn't get to Hurlstone but I'm told it was also well worth a visit.

But the highlight of the rally was what followed the garden visits. We all converged on the clubrooms to have a combined afternoon tea with the participants of a touring rally run by the Vintage Motorcycle Club of Victoria. Having about 60 cars and 70 motorcycles together in a fairly confined space

*1927 BUICK Standard tourer*

A very nice Indian outfit with indian's head ornament on the sidecar.

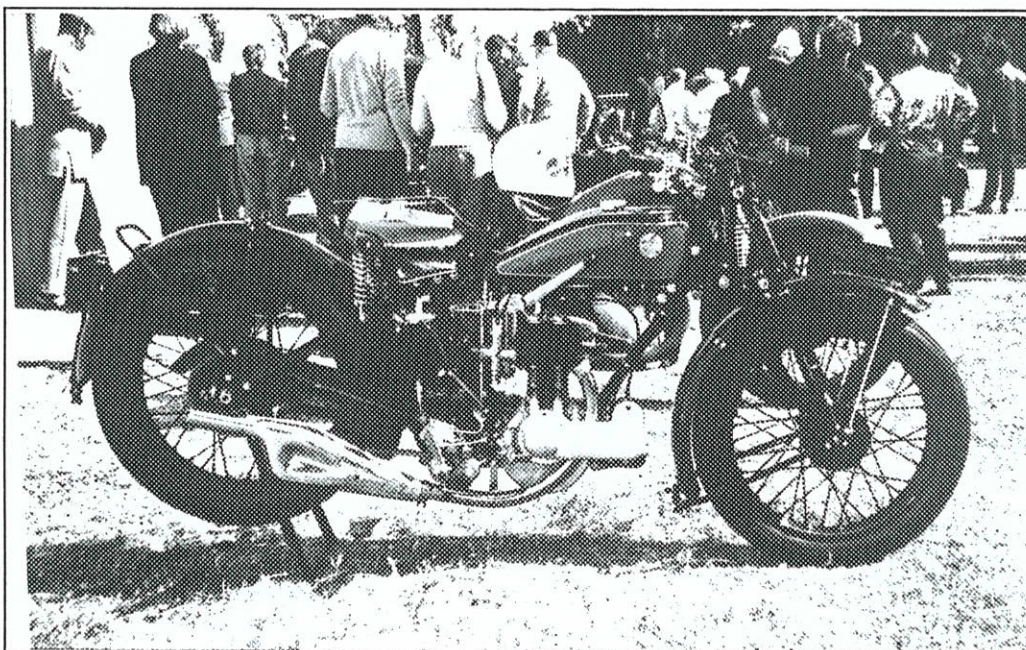


meant you couldn't move without running into more motoring history. The rally cars varied from big Packard and Buick sedans to little 8hp Fords, while the motorcycles varied from popular makes such as Indian and Harley Davidson to rare and exotic makes like Brough. (And if you want to know how to make some quick money, just ask Hugh and Max!)

Monday's run to Elmore was a bit down on numbers as a few entrants had to go to work, but it was still a great day. Morning tea in Rushworth was enough to keep you going for quite a while, and we gave all the primary school kids a thrill with a procession of vehicles leaving to climb up to the Growlers Hill Lookout.

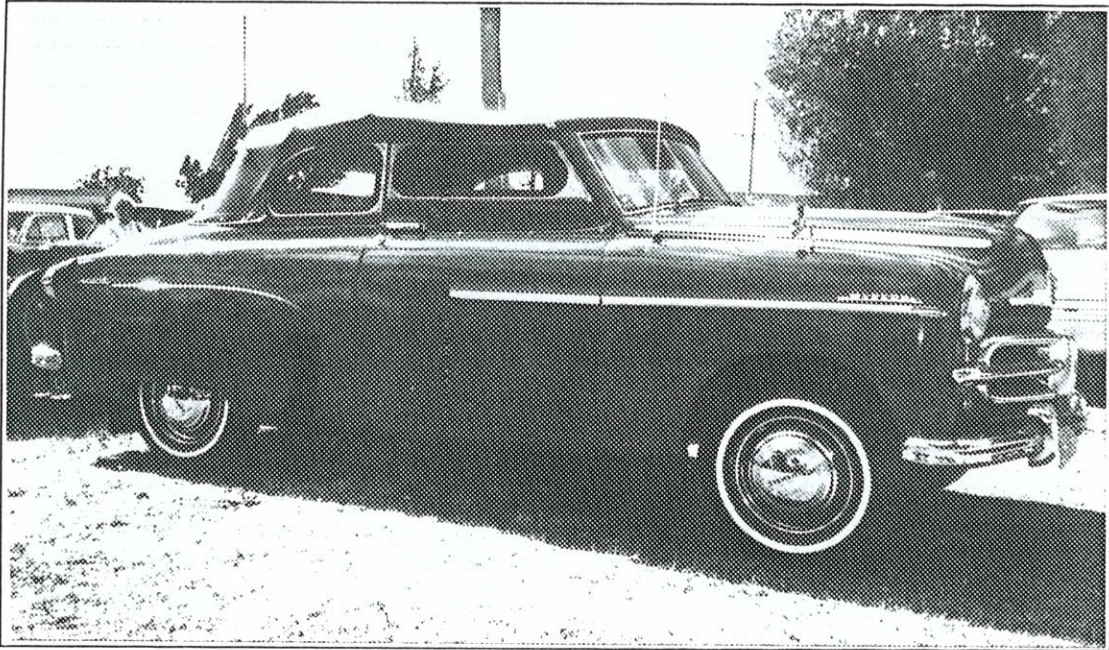
In Elmore, we had an educational tour of the H.V. McKay Rural Discovery Centre while others were getting their picture taken (see p.15). Then we ventured across the road to the Victoria Hotel for another big roast lunch.

We headed out the Midland Hwy towards Shepp after lunch, but turned off near the Elmore Field Days site to go to "Burnewang" Mansion. This 35 room residence, built in 1903, had been used for a variety of purposes until the present owners bought it. As they have now finished restoring "Rupertswood" in Sunbury, they intend to put a big effort into restoring "Burnewang". Several rooms have been done and it will be magnificent when finished. We had a chance to tour the whole building, including a climb to the



1929 TRIUMPH model NSD

Rally Report cont.



1953 VAUXHALL Vagabond

roof-top lookout, and the adjoining stables and coach-house. It must have been idyllic when it was new, with a very large garden adjoining a bend in the Campaspe River.

Our evening function at the Football Clubrooms was an enjoyable night, although it seemed fairly laid back after three solid days of rallying! Prizes were presented and a few keen ones even had a dance or two.

Tuesday morning breakfast was on the banks of Lake Victoria in the heart of Shepp. Those that could make it had a hearty meal before setting off on their homeward journey. It had been a great weekend.



Burnewang Mansion, on the banks of the Campaspe River near Elmore.

Rally Director's Message

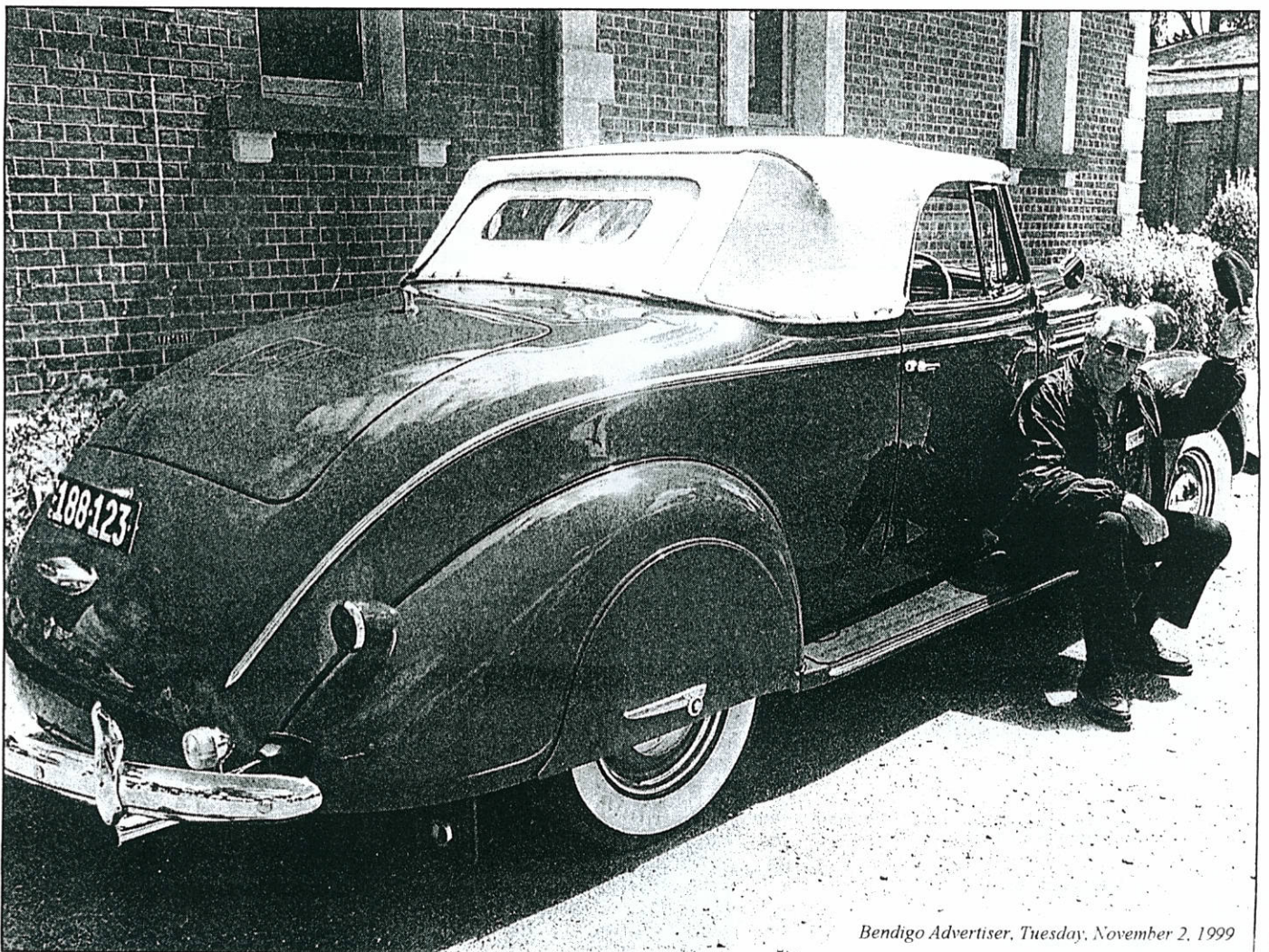
Our recent Rally of the Valley, held over the Melbourne Cup weekend, was very successful. There were a total of 76 entries with cars coming from as far away as Penola in South Australia, the Western District and West Gippsland. We had no problems to speak of and it was pleasing to see a number of entrants returning after attending several of our earlier Rallies.

It was extremely encouraging to see the way the Rally Committee worked together as a team. I would like to thank the members of the Committee for their support and also all those other members who assisted in various ways over the four days. Particularly I would like to thank the Ladies Committee for the wonderful job they did on the Saturday night and the Tuesday morning. Also Les Smith for assisting in various ways before and during the Rally.

The Committee had a lot of positive feedback on the event, particularly favourable comments were made by visitors about the friendly helpful attitude of our members towards visitors and any assistance they may have needed. Well done folks.

*George Young
Rally Director*

Norm's having a wheely good time



Bendigo Advertiser, Tuesday, November 2, 1999

RALLY RELIC: Norm Lehmann, of Whittington, stops in Elmore with his 1937 Dodge convertible coupe as part of a three-day veteran car rally.

Are they calling the 1937 DODGE a rally relic or Norm?!